

# FANUC Robot **SR-3*i*A, SR-6*i*A**

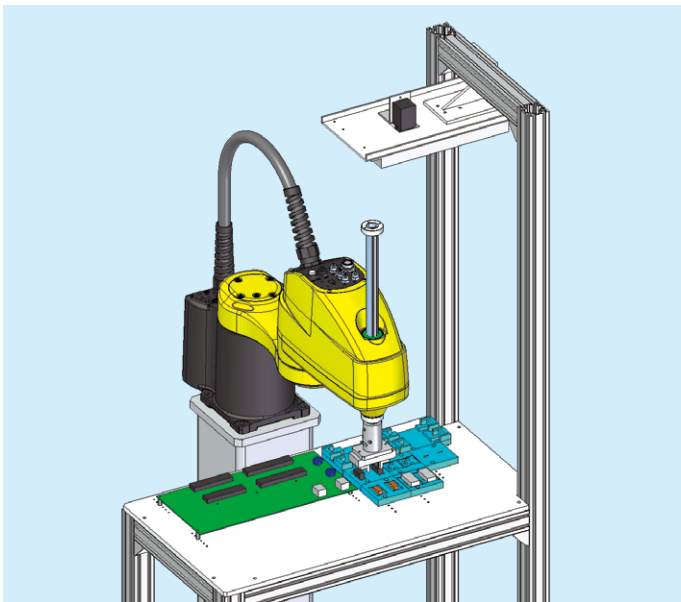


## FEATURES

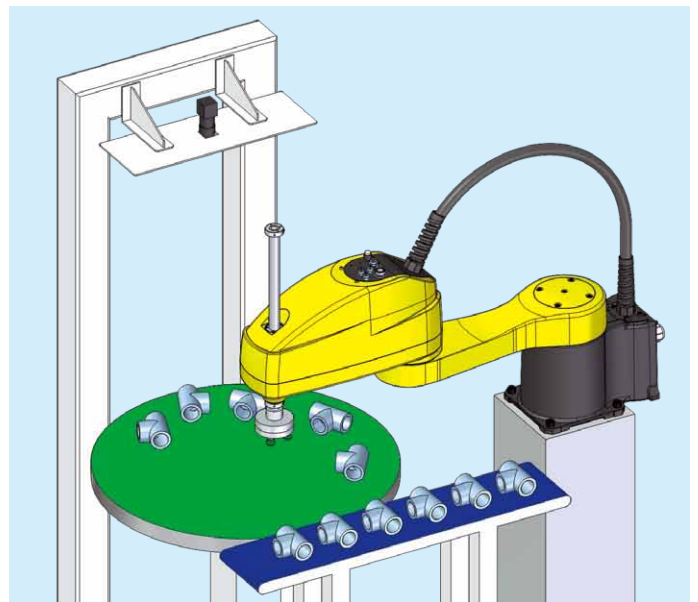
FANUC Robot SR-3*i*A, SR-6*i*A are compact and high performance SCARA robots.

- Two models are available to meet a variety of payload and motion area.
  - SR-3*i*A Payload : 3kg Reach : 400mm
  - SR-6*i*A Payload : 6kg Reach : 650mm
- The lightweight arm and the most advanced servo technology enable high accuracy and high duty performance, which improves the productivity.
- Solenoid valve, air tube and I/O cable for the device control are integrated in the J2 arm. The hollow arm on the J4 rotation axis realizes easy wiring for a gripper.
- The small size of R-30*i*B Compact Plus controller can be easily integrated into the machine.
- Simple teaching can be conducted on the PC or Tablet PC by newly developed teaching interface, which improves ease of use.
- Latest intelligent functions are available, such as *i*RVision (integrated vision) and *i*RPickTool.
- The high reliability is realized based on the longtime accumulated reliability design technologies.

## Application Examples



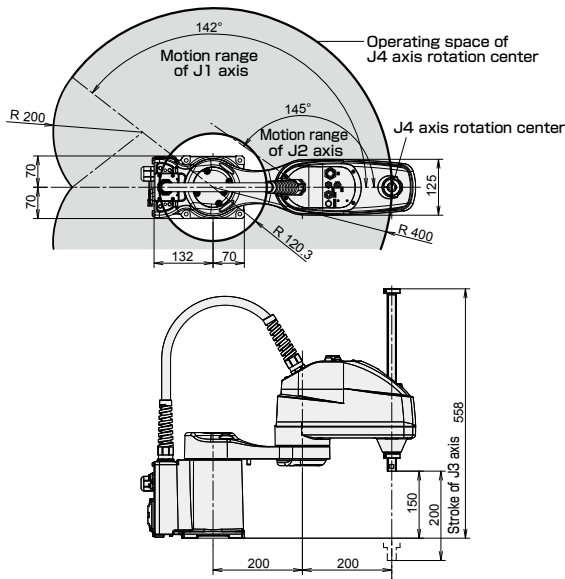
Circuit board assembly by SR-3*i*A



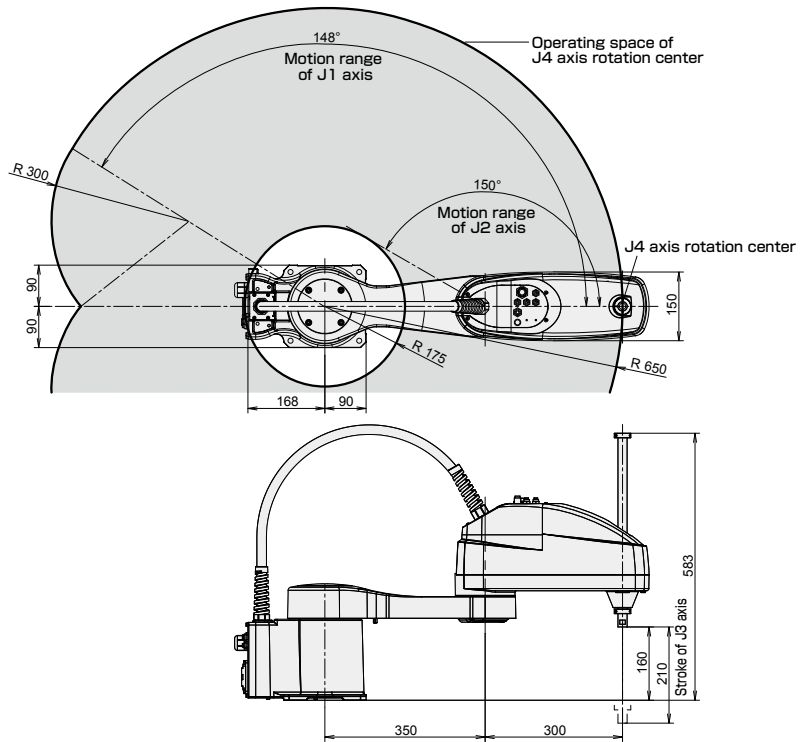
Visual circular tracking by SR-6*i*A

# Operating Space

## SR-3iA



## SR-6iA



## Specifications

Model		SR-3iA	SR-6iA
Type		Scara Type	
Controlled axes		4 axes (J1, J2, J3, J4)	4 axes (J1, J2, J3, J4)
Reach		400 mm	650 mm
Installation		Floor, Wall	Floor, Wall
Motion range (Maximum speed) (Note 1)	J1 axis	±142° (720° /s) 2.48 rad (12.57 rad/s)	±148° (440° /s) 2.58 rad (7.68 rad/s)
	J2 axis	±145° (780° /s) ±2.53 rad (13.61 rad/s)	±150° (700° /s) ±2.62 rad (12.22 rad/s)
	J3 stroke	200mm (1800 mm/s)	210mm (2000 mm/s)
	J4 axis	±360° (3000° /s) 6.28 rad (52.36 rad/s)	±360° (2500° /s) 6.28 rad (43.63 rad/s)
Cycle time (Note 2)		0.33s	0.29s
Max. load capacity at wrist		3 kg	6 kg
Allowable load inertia at wrist	J4 axis	0.06 kg·m <sup>2</sup>	0.12 kg·m <sup>2</sup>
	J1 + J2 axis	±0.01 mm	±0.01 mm
Repeatability	J3 stroke	±0.01 mm	±0.01 mm
	J4 axis	±0.004°	±0.004°
	Standard	RI x 4 / RO x 4, Φ6mm x 1, Φ4mm x 2	RI x 4, Φ6mm x 1, Solenoid valve x 2
Cables and air for user		Option	
Mass (Note 3)		19 kg	30 kg
Installation environment		Ambient temperature : 0 to 45°C Ambient humidity : Normally 75%RH or less (No dew nor frost allowed) Short term 95%RH or less (within one month) Vibration acceleration : 4.9 m/s <sup>2</sup> (0.5G) or less	

Note 1) During short distance motions, the axis speed may not reach the maximum value stated.

Note 2) Cycle time for 25mm-300mm-25mm motion pattern with 2kg payload.

Note 3) Without controller.

# FANUC CORPORATION

Headquarters Oshino-mura, Yamanashi 401-0597, Japan

Phone: 81-555-84-5555 Fax: 81-555-84-5512 <http://www.fanuc.co.jp>

●Overseas Affiliated Companies  
 FANUC America Corporation  
 FANUC Europe Corporation, S.A.  
 SHANGHAI-FANUC Robotics CO., LTD.  
 KOREA FANUC CORPORATION  
 TAIWAN FANUC CORPORATION  
 FANUC INDIA PRIVATE LIMITED  
 FANUC SINGAPORE PTE. LTD.  
 FANUC THAI LIMITED  
 FANUC MECHATRONICS (MALAYSIA) SDN. BHD.  
 PT. FANUC INDONESIA  
 FANUC OCEANIA PTY. LIMITED  
 FANUC SOUTH AFRICA (PROPRIETARY) LIMITED

3900 West Hamlin Road, Rochester Hills, MI 48309-3253, U.S.A.  
 Zone Industrielle, L-6468 Echternach, Grand-Duché de Luxembourg  
 No. 1500 Fuliang Road, Baoshan Area, Shanghai, China  
 101, Wanam-ro(st), Seongsan-gu, Changwon-si, Gyeongsangnam-do, 642-290 Republic of Korea  
 No.10, 16th Road, Taichung Industrial Park, Taichung, Taiwan  
 41-A, Electronics City, Bangalore, 560 100, India  
 No.1 Teban Gardens Crescent, Singapore 608919, Singapore  
 1301 Pattanakarn Road, Kwaeng Suanluang, Khet Suanluang, Bangkok 10250 Thailand  
 No.32, Jalan Pengacara U1/48, Temasya Industrial Park, Section U1, Glenmarie,  
 40150 Shah Alam, Selangor Darul Ehsan, Malaysia  
 JL. Boulevard Bukit Gading Raya Blok R, Jakarta 14240 Indonesia  
 10 Healey Circuit, Huntingwood, NSW 2148, Australia  
 17 Loper Ave. Aeroport Industrial Ests, Spartan Ext.2 P.O.Box 219, Isando 1600, Republic of South Africa

Phone: 1-248-377-7000 Fax: 1-855-774-7051  
 Phone: 352-727777-1 Fax: 352-727777-403  
 Phone: 86-21-5032-7700 Fax: 86-21-5032-7711  
 Phone: 82-55-278-1200 Fax: 82-55-284-9826  
 Phone: 886-4-2359-0522 Fax: 886-4-2359-0771  
 Phone: 91-80-2852-0057 Fax: 91-80-2852-0051  
 Phone: 65-6567-8566 Fax: 65-6566-5937  
 Phone: 66-2-714-6111 Fax: 66-2-714-6120  
 Phone: 60-3-7628-0110 Fax: 60-3-7628-0220  
 Phone: 62-21-4584-7285 Fax: 62-21-4584-7288  
 Phone: 61-2-8822-4600 Fax: 61-2-8822-4666  
 Phone: 27-11-392-3610 Fax: 27-11-392-3615

- All specifications are subject to change without notice.
- No part of this catalog may be reproduced in any form.
- The products in this catalog are controlled based on Japan's "Foreign Exchange and Foreign Trade Law". The export from Japan may be subject to an export license by the government of Japan. Further, re-export to another country may be subject to the license of the government of the country from where the product is re-exported. Furthermore, the product may also be controlled by re-export regulations of the United States government. Should you wish to export or re-export these products, please contact FANUC for advice.